

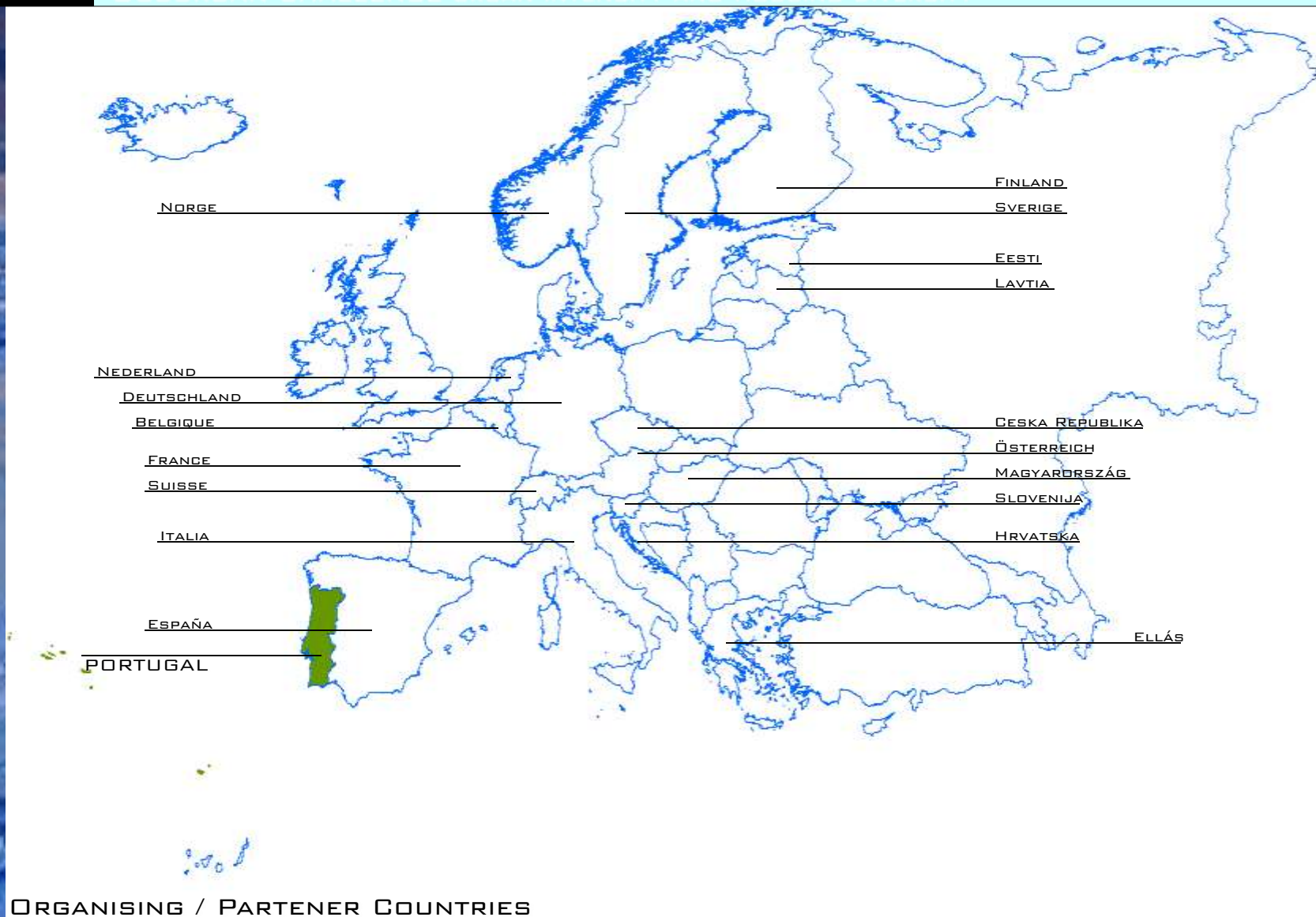
# EUROPAN 7

SUBURBAN CHALLENGE URBAN INTENSITY AND HOUSING DIVERSITY



# EUROPAN 7

SUBURBAN CHALLENGE URBAN INTENSITY AND HOUSING DIVERSITY



ORGANISING / PARTENER COUNTRIES

# EUROPAN 7

SUBURBAN CHALLENGE URBAN INTENSITY AND HOUSING DIVERSITY

VILA DO CONDE

A PART OF LISBON'S M.D.

NEW ACCESSIBILITIES

CONTINUOUS FERRYBOAT CONNECTIONS

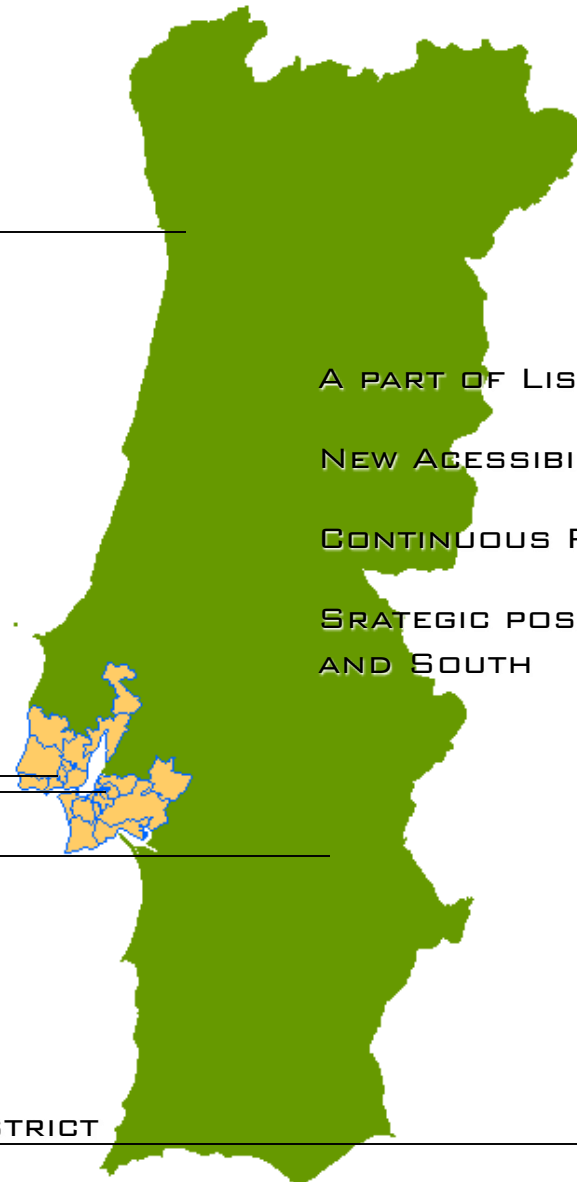
STRATEGIC POSITION CONNECTING NORTH  
AND SOUTH

OEIRAS

MONTIJO

ÉVORA

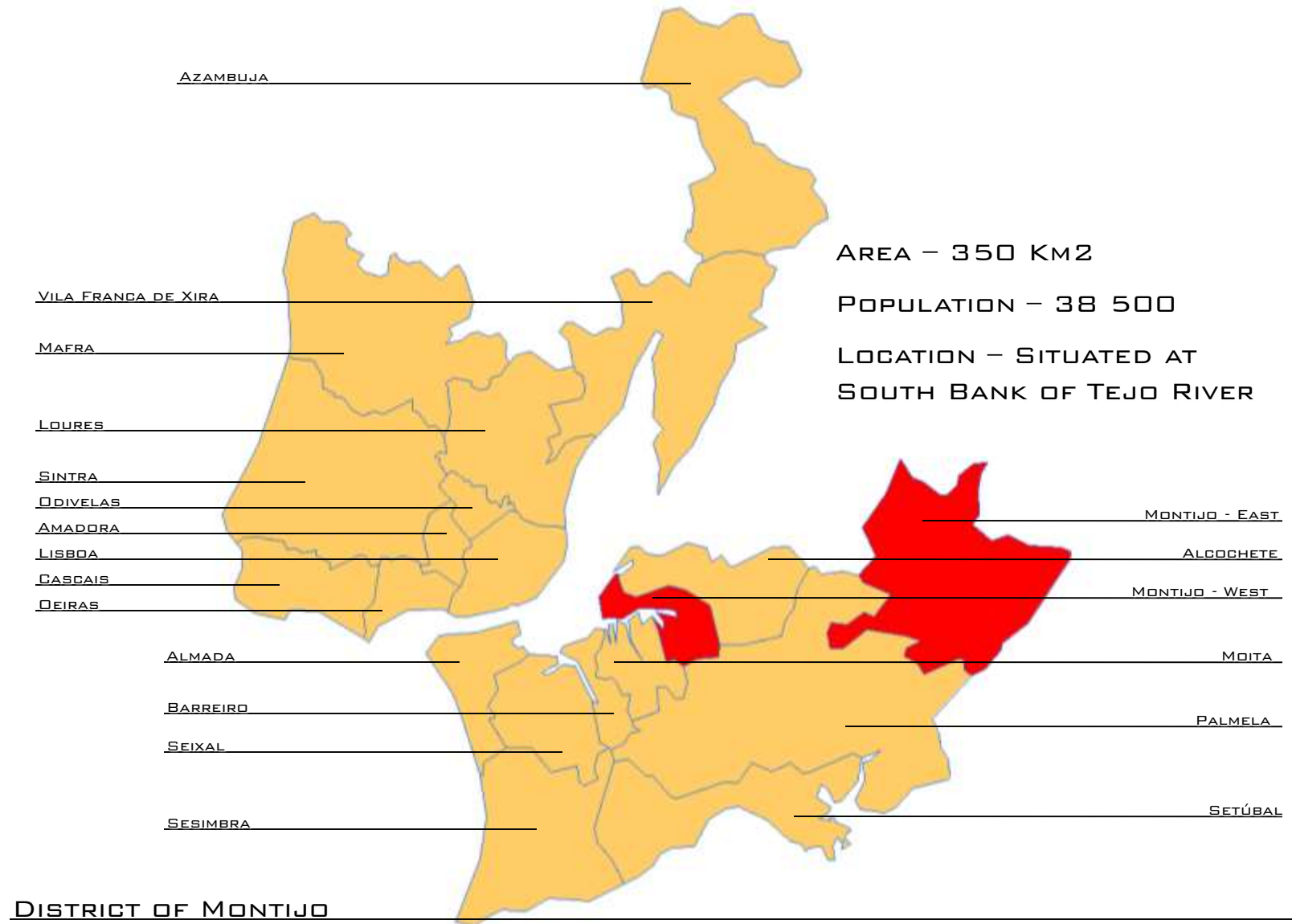
LISBON'S METROPOLITAN DISTRICT





# EUROPAN 7

SUBURBAN CHALLENGE URBAN INTENSITY AND HOUSING DIVERSITY





# EUROPAN 7

SUBURBAN CHALLENGE URBAN INTENSITY AND HOUSING DIVERSITY



POPULATION - 22 200

THE STUDY AREA - 14 HECTARE

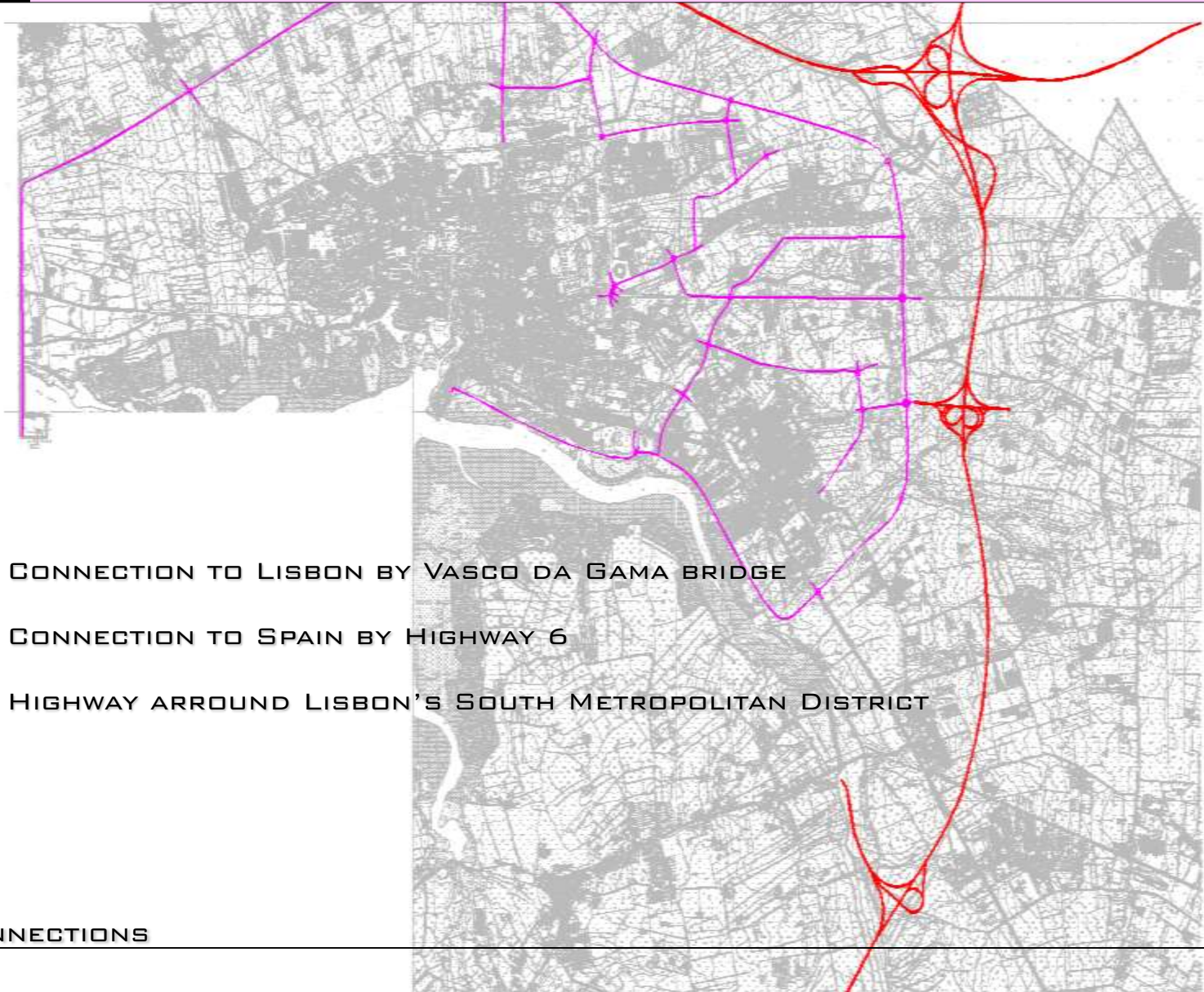
THE INTERVENTION AREA - 0,5 HECTARE

CITY OF MONTIJO



# EUROPAN 7

SUBURBAN CHALLENGE URBAN INTENSITY AND HOUSING DIVERSITY



CONNECTION TO LISBON BY VASCO DA GAMA BRIDGE

CONNECTION TO SPAIN BY HIGHWAY 6

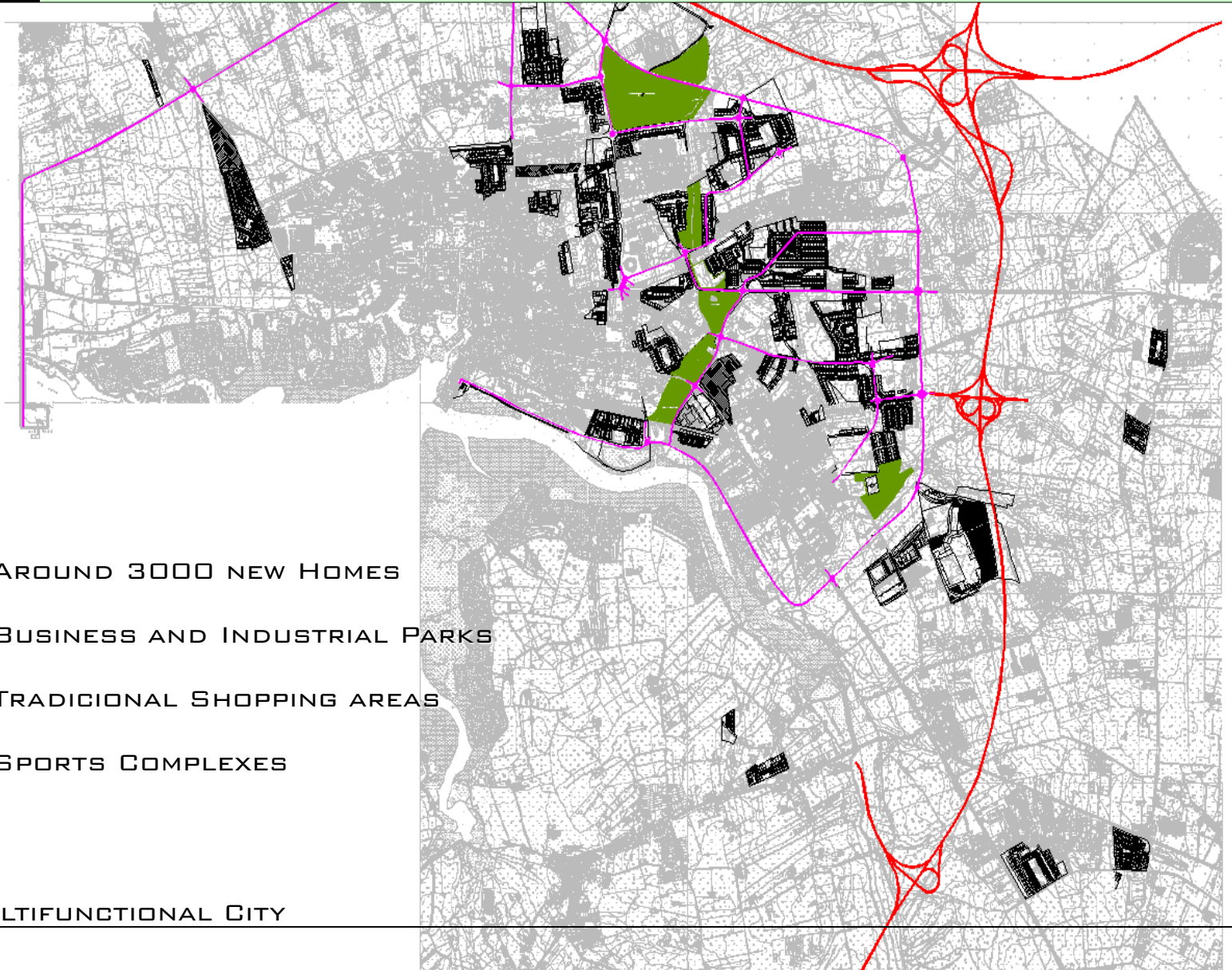
HIGHWAY AROUND LISBON'S SOUTH METROPOLITAN DISTRICT

CONNECTIONS



# EUROPAN 7

SUBURBAN CHALLENGE URBAN INTENSITY AND HOUSING DIVERSITY



AROUND 3000 NEW HOMES

BUSINESS AND INDUSTRIAL PARKS

TRADICIONAL SHOPPING AREAS

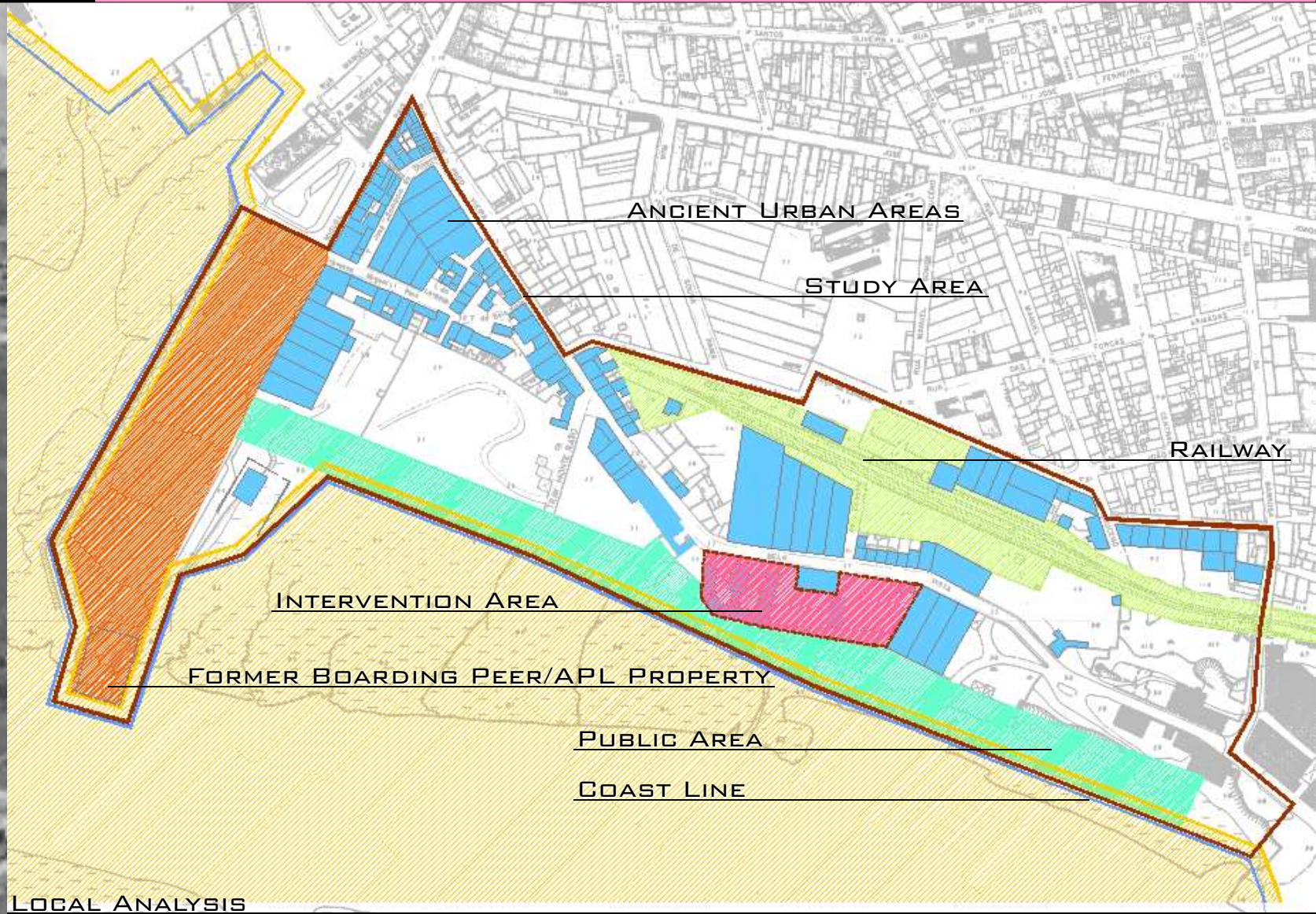
SPORTS COMPLEXES

MULTIFUNCTIONAL CITY



# EUROPAN 7

SUBURBAN CHALLENGE URBAN INTENSITY AND HOUSING DIVERSITY





# EUROPAN 7

SUBURBAN CHALLENGE URBAN INTENSITY AND HOUSING DIVERSITY





# EUROPAN 7

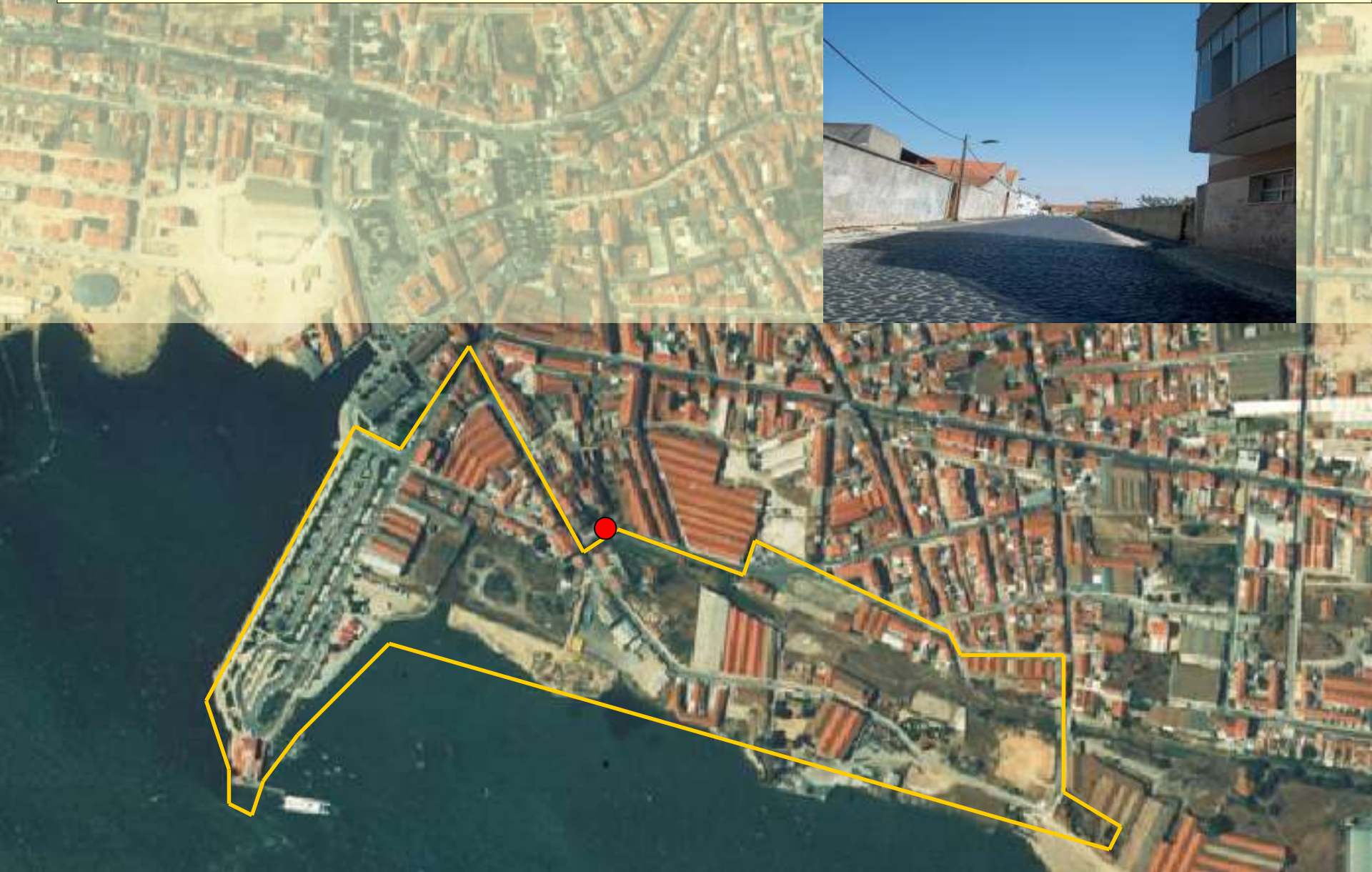
SUBURBAN CHALLENGE URBAN INTENSITY AND HOUSING DIVERSITY





# EUROPAN 7

SUBURBAN CHALLENGE URBAN INTENSITY AND HOUSING DIVERSITY





# EUROPAN 7

SUBURBAN CHALLENGE URBAN INTENSITY AND HOUSING DIVERSITY





# EUROPAN 7

SUBURBAN CHALLENGE URBAN INTENSITY AND HOUSING DIVERSITY





# EUROPAN 7

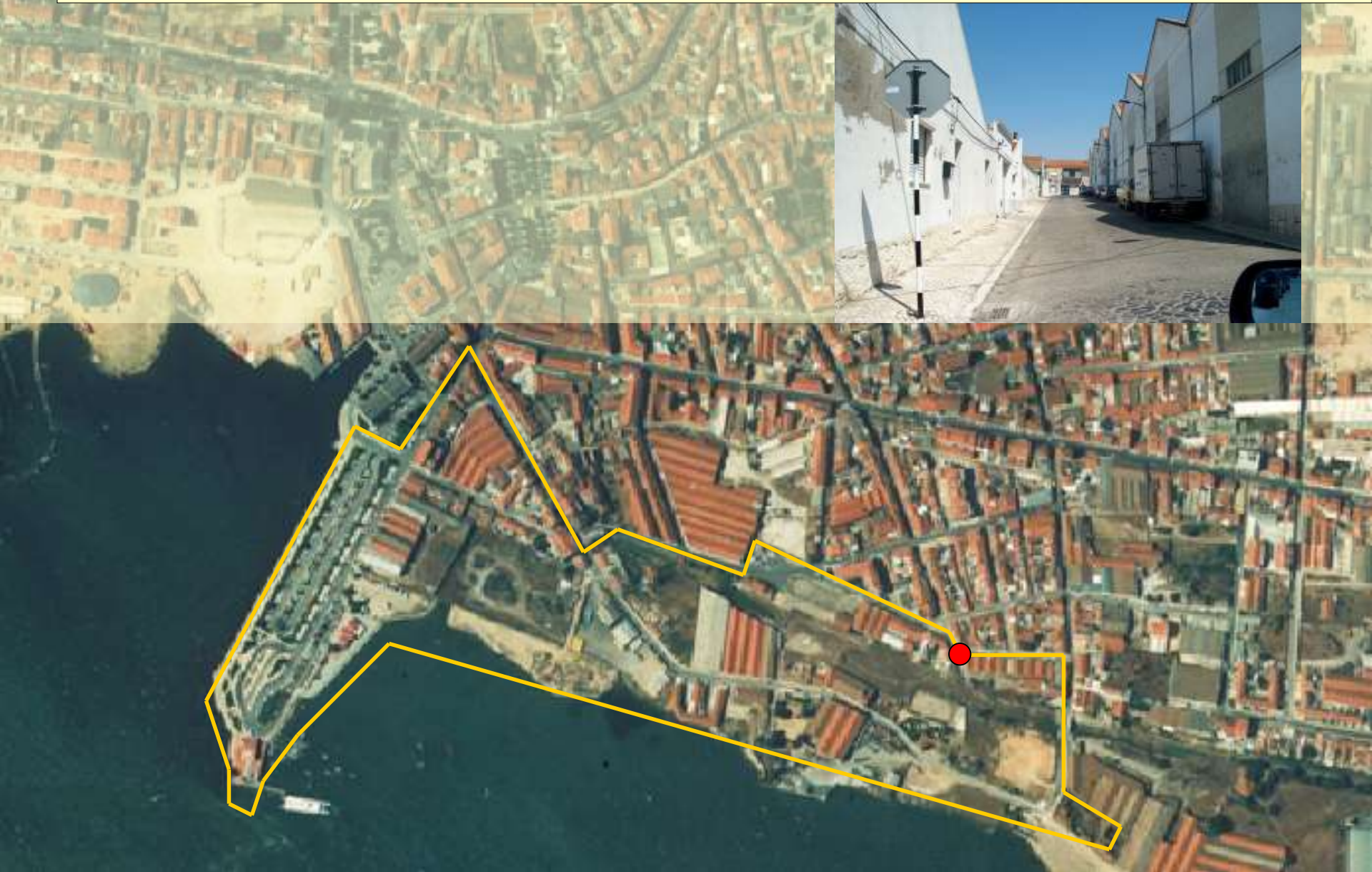
SUBURBAN CHALLENGE URBAN INTENSITY AND HOUSING DIVERSITY





# EUROPAN 7

SUBURBAN CHALLENGE URBAN INTENSITY AND HOUSING DIVERSITY





# EUROPAN 7

SUBURBAN CHALLENGE URBAN INTENSITY AND HOUSING DIVERSITY





# EUROPAN 7

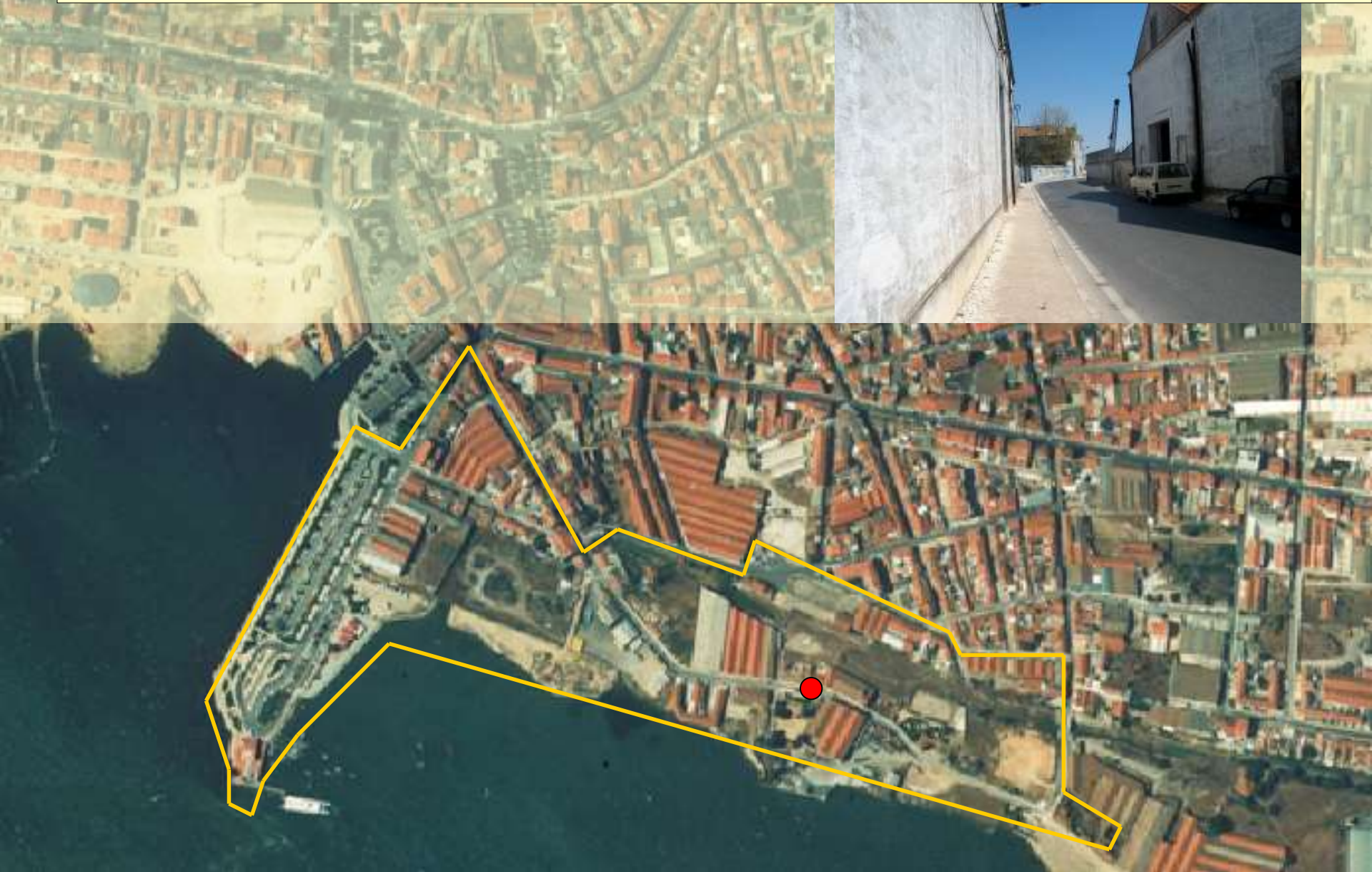
SUBURBAN CHALLENGE URBAN INTENSITY AND HOUSING DIVERSITY





# EUROPAN 7

SUBURBAN CHALLENGE URBAN INTENSITY AND HOUSING DIVERSITY





# EUROPAN 7

SUBURBAN CHALLENGE URBAN INTENSITY AND HOUSING DIVERSITY





# EUROPAN 7

SUBURBAN CHALLENGE URBAN INTENSITY AND HOUSING DIVERSITY





# EUROPAN 7

SUBURBAN CHALLENGE URBAN INTENSITY AND HOUSING DIVERSITY





# EUROPAN 7

SUBURBAN CHALLENGE URBAN INTENSITY AND HOUSING DIVERSITY





# EUROPAN 7

SUBURBAN CHALLENGE URBAN INTENSITY AND HOUSING DIVERSITY





# EUROPAN 7

SUBURBAN CHALLENGE URBAN INTENSITY AND HOUSING DIVERSITY





# EUROPAN 7

SUBURBAN CHALLENGE URBAN INTENSITY AND HOUSING DIVERSITY





# EUROPAN 7

SUBURBAN CHALLENGE URBAN INTENSITY AND HOUSING DIVERSITY





# EUROPAN 7

SUBURBAN CHALLENGE URBAN INTENSITY AND HOUSING DIVERSITY





# EUROPAN 7

SUBURBAN CHALLENGE URBAN INTENSITY AND HOUSING DIVERSITY





# EUROPAN 7

SUBURBAN CHALLENGE URBAN INTENSITY AND HOUSING DIVERSITY

CONSOLIDATE THE URBAN FRAGMENTS

CREATE NEW SPORT AND LEISURE EQUIPMENTS

INCREASING RELATIONSHIP BETWEEN THE CITY  
AND THE RIVER

IMPROVING THE RAIL ACCESSIBILITIES

25 HOMES FOR THE YOUNG POPULATION

SMALL COMMERCE UNITS

MICRO BUSINESS LOFTS

SPECIFIC URBAN AREAS

STUDY / INTERVENTION AREA



# EUROPAN 7

SUBURBAN CHALLENGE URBAN INTENSITY AND HOUSING DIVERSITY

ARTICULATING NEW POLARITIES

CONVERTING URBAN VOIDS

IMPROVING RELATIONSHIP BETWEEN  
THE CITY AND THE RIVER

STRATEGIC URBAN PLANNING

